



ZAGREBAČKA BURZA
THE ZAGREB STOCK EXCHANGE

Trading Summary
First half of 2005

Zagreb, July 2005

The Zagreb Stock Exchange information

1. INTERNET

<http://www.zse.hr/>

2. REUTERS

ZAGSTOCK, ZAGSTOCL - daily shares prices

SEZH - daily bonds prices

.CRBEX - CROBEX index

.CRBEX (chain) - CROBEX index constituents-by RIC code

CRBEX.ZA (chain) - CROBEX index constituents-by company

MAIN.ZA (chain) - Zagreb Stock Exchange shares

This report or any part thereof may be reprinted, copied or redistributed in any way only with prior written permission and full credit.

The information contained herein is compiled and collected with care, but total accuracy and/or completeness is not guaranteed by the Zagreb Stock Exchange (ZSE). This publication is issued with the express condition to which everyone purchasing and making use thereof assents that no liability shall be incurred by ZSE. This publication is issued for information purposes only and is not to be construed in any way as an invitation to purchase or sell any security mentioned herein. ZSE recommends to any potential investor to seek professional advice before investing.

Copyright © 2005 by The Zagreb Stock Exchange
Zagreb
Ksaver 200
Croatia

Contents:

- 1. COMPARISON WITH PREVIOUS HALF..... 2**
- 2. TRADING..... 3**
 - 2.1. MONTHLY TRADING OVERVIEW..... 3
 - 2.2. STOCKS WITH THE LARGEST MARKET CAPITALIZATION..... 5
 - 2.3. MOST ACTIVE STOCKS BY TURNOVER 5
 - 2.4. STOCKS PERFORMANCE..... 6
 - 2.5. BONDS PERFORMANCE 8
 - 2.6. CERTIFICATES PERFORMANCE 10
 - 2.7. COMMERCIAL PAPERS PERFORMANCE 10
 - 2.8. TOP 10 MEMBERS BY TOTAL TURNOVER 11
 - 2.9. BEST PERFORMING STOCKS..... 11
 - 2.10. UNDER PERFORMING STOCKS 11
 - 2.11. FINANCIAL RATIOS..... 12
- 3. MAJOR EVENTS..... 13**
- 4. PRICES AND VOLUMES FOR THE MOST ACTIVE STOCKS..... 15**
- 5. LISTED COMPANIES 18**
- 6. LISTED BONDS 22**
- 7. LISTED CERTIFICATES 23**
- 8. LISTED COMMERCIAL PAPERS 23**
- 9. METHODOLOGICAL REMARKS..... 24**

1. Comparison with Previous Half

(Turnover and Market Capitalization in millions of HRK)

	Second half of 2004	First half of 2005	% change
Regular turnover:			
Equities	1.724,7	2.662,1	54,3
Bonds	255,1	174,9	-31,4
Certificates	1,7	0,7	-60,6
Reported turnover*	1.657,4	1.454,6	-12,2
Institutional turnover**	11.699,6	9.819,7	-16,1
Total	15.338,6	14.112,0	-8,0
Regular volume:			
Equities	6.236.938	5.963.269	-4,4
Bonds	79.285.948	99.771.322	25,8
Certificates	2.345.995	842.620	-64,1
Reported volume*	242.921.465	528.812.547	117,7
Institutional volume**	2.460.724.175	3.800.886.768	54,5
Total	2.791.514.521	4.436.276.526	58,9
CROBEX[©]	1.565,8	1.807,5	15,4
CROBIS[©]	102,1658	104,1413	1,9
Total number of trades	34.268	54.833	60,0
Number of securities traded	139	146	5,0
Market Capitalization			
Equities	61.734,4	68.776,4	11,4
Bonds	24.559,5	25.837,0	5,2
Total	86.293,9	94.613,4	9,6
Number of trading days	128	124	-3,1
Number of listed shares			
Official Market	4	5	25,0
JDD Market	133	129	-3,0
Parallel Market	46	55	19,6
Daily average:			
Turnover	119,83	113,81	-5,0
Volume	21.808.707	35.776.424	64,0
Number of trades	268	442	65,2
Exchange rate at the end of period	5,6369	6,0628	7,6

*Reported trades are trades with bonds greater than 3,000,000 HRK in accordance with the Zagreb Stock Exchange Rules.

**Institutional trades are trades reported to the Exchange by institutional investors in accordance with Securities Law.

2. Trading

2.1. Monthly Trading Overview

(Market Capitalization in millions of HRK)

Month	Number of trades		Volume		Number of securities traded	Market Capitalization
	Total	Average daily	Total	Average daily		
January	14.602	730	338.144.961	16.907.248	86	96.680,6
February	13.708	685	438.323.760	21.916.188	115	100.542,3
March	8.997	428	1.101.149.976	52.435.713	87	94.302,3
April	6.764	322	596.914.517	28.424.501	118	92.131,8
May	5.291	252	1.114.025.303	53.048.824	84	88.712,8
June	5.471	261	847.718.009	40.367.524	117	94.613,4
Total	54.833	442	4.436.276.526	35.776.424	146	

(Turnover in millions of HRK and average value of transaction in thousands of HRK)

Month	Equity		Bonds		Total turnover
	Turnover	% total turnover	Turnover	% total turnover	
January	623,3	27,9	1.612,6	72,1	2.235,9
February	780,5	28,5	1.957,6	71,5	2.738,1
March	433,6	15,1	2.441,9	84,9	2.875,4
April	292,8	16,1	1.524,6	83,8	1.818,3
May	241,4	10,1	2.158,6	89,9	2.400,0
June	290,6	14,2	1.753,7	85,8	2.044,3
Total	2.662,1	18,9	11.448,9	81,1	14.112,0

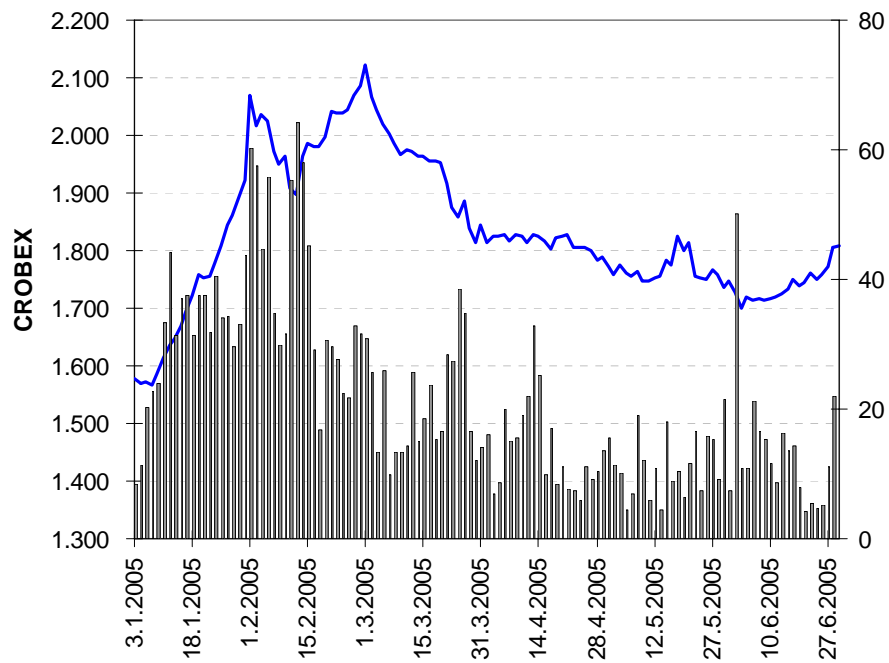


Chart 1: CROBEX[®] and equity turnover

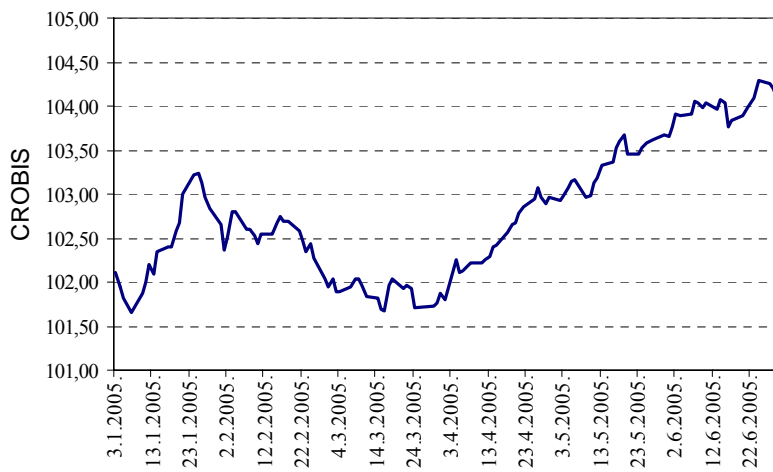


Chart 2: Zagreb Stock Exchange bond index CROBIS[®]

2.2. Stocks with the Largest Market Capitalization

(Market capitalization in millions of HRK)

	Symbol	Market Cap 30.06.2005.	Pct. of Mkt Cap	Cumulative percentage
1	ZABA-R-A	10.776,0	15,7	15,7
2	PBZ-R-A	9.329,6	13,6	29,2
3	PLVA-R-A	7.065,2	10,3	39,5
4	RIBA-R-A	4.237,6	6,2	45,7
5	ERNT-R-A	2.463,6	3,6	49,2
6	ADRS-P-A	2.358,2	3,4	52,7
7	ZAPI-R-A	1.985,4	2,9	55,5
8	TNPL-R-A	1.747,0	2,5	58,1
9	CROS-R-A	1.630,3	2,4	60,5
10	DABA-R-A	1.593,5	2,3	62,8
	Others	25.590,0	37,2	100,0
	Total	68.776,4		

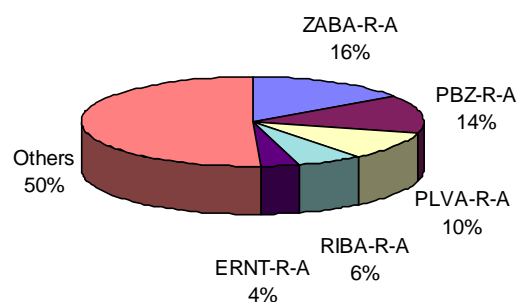


Chart 3: Market Capitalization

2.3. Most Active Stocks by Turnover

(Turnover in millions of HRK)

	Symbol	Turnover	Pct.	Cumulative percentage
1	ADRS-P-A	661,4	24,8	24,8
2	PLVA-R-A	409,5	15,4	40,2
3	PODR-R-A	285,4	10,7	51,0
4	ATPL-R-A	162,5	6,1	57,1
5	TNPL-R-A	139,3	5,2	62,3
6	KOEI-R-A	105,1	3,9	66,2
7	PTKM-R-A	70,6	2,7	68,9
8	IGH-R-A	64,8	2,4	71,3
9	ERNT-R-A	56,9	2,1	73,5
10	MDKA-R-A	56,1	2,1	75,6
	Others	650,4	24,4	100,0
	Total	2.662,1		

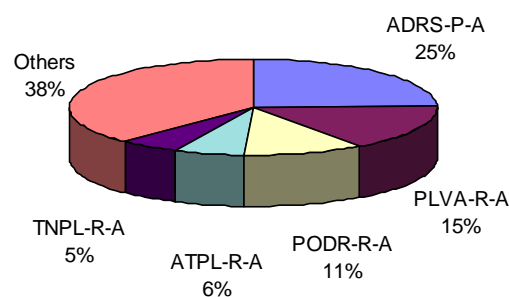


Chart 4: Structure of equity turnover

2.4. Stocks Performance

(All prices and turnover in Kunas, market capitalization in millions of Kunas)

Symbol	High	Low	Last	Average	Date	Net change	Volume	Turnover	Market Cap.
Official Market									
CROS-P-A	5.400,00	4.100,00	5.000,00	4.931,74	30.6.2005	22,0	2.261	11.150.671	43,8
CROS-R-A	6.075,00	4.001,04	5.299,99	5.199,29	30.6.2005	20,5	2.754	14.318.851	1.630,3
ISTT-R-A	250,00	120,00	180,00	184,34	30.6.2005	52,5	192.804	35.541.286	841,5
PLVA-R-A	447,00	300,00	380,00	358,70	30.6.2005	4,4	1.141.690	409.524.380	7.065,2
PODR-R-A	365,00	229,00	280,00	295,69	30.6.2005	17,2	965.296	285.425.060	1.517,6
JDD Market									
ADHT-R-A	511,01	120,00	506,00	482,08	30.6.2005	321,7	10.410	5.018.503	170,8
ADRS-P-A	5.500,00	3.025,00	3.476,00	4.315,30	30.6.2005	-0,7	153.265	661.383.958	2.358,2
ANTA-R-A	7.500,00	5.900,00	7.500,00	6.568,89	24.1.2005	33,9	395	2.594.710	646,5
ARNT-R-A	275,00	121,00	168,04	204,98	29.6.2005	39,5	68.441	14.028.973	366,7
ATLS-R-A	100,00	59,98	84,00	83,33	30.6.2005	49,4	118.103	9.842.083	160,4
ATPL-R-A	920,00	480,00	593,00	679,26	30.6.2005	18,6	239.302	162.548.912	807,8
AUHR-R-A	5.000,00	4.200,00	4.200,00	4.400,00	31.5.2005	-16,0	4	17.600	75,1
BD62-R-A	300,00	147,00	225,00	238,35	29.6.2005	54,1	61.701	14.706.297	169,2
BDMR-R-A	1.000,00	923,99	1.000,00	994,38	31.3.2005	8,2	73	72.590	99,3
BLSC-R-A	400,00	286,00	330,00	329,48	30.6.2005	14,2	56.432	18.593.265	384,2
BRAT-R-A	56,00	56,00	56,00	56,00	24.6.2005	0,0	66	3.696	8,7
CEBA-R-A	410,00	300,00	410,00	356,64	30.6.2005	36,7	1.419	506.075	90,9
DABA-R-A	824,00	600,00	700,00	792,41	14.6.2005	-9,7	13.163	10.430.532	1.593,5
DLKV-R-A	480,01	260,00	330,00	358,69	30.6.2005	26,9	143.413	51.440.824	757,0
DLMC-R-A	700,00	700,00	700,00	700,00	6.6.2005	0,0	66	46.200	1.190,0
ELKA-R-A	150,00	96,01	105,00	116,79	30.6.2005	3,9	45.333	5.294.650	161,3
ELPR-R-A	349,99	180,00	200,01	279,36	30.6.2005	-13,0	72.918	20.370.197	67,0
ERNT-R-A	2.300,00	1.495,00	1.850,00	2.049,01	28.6.2005	25,0	27.756	56.872.200	2.463,6
EXCL-R-A	170,00	65,00	135,00	99,85	22.3.2005	107,7	3.678	367.255	64,1
EXPD-R-A	270,00	270,00	270,00	270,00	12.1.2005	-10,0	100	27.000	42,9
FNVC-R-A	300,00	151,11	155,00	241,06	29.6.2005	-29,5	15.815	3.812.418	95,8
FRNK-R-A	1.700,00	1.000,00	1.150,00	1.276,89	29.6.2005	4,5	12.669	16.176.970	491,2
GHPA-R-A	400,00	390,00	390,00	394,55	26.4.2005	290,0	88	34.720	54,6
GPDU-R-A	230,00	230,00	230,00	230,00	24.5.2005	0,0	50	11.500	29,6
HDEL-R-A	110,00	105,00	110,00	105,54	25.1.2005	0,0	46	4.855	68,6
HICZ-R-B	400,00	270,00	385,00	365,44	30.6.2005	60,4	453	165.545	334,9
HMAM-R-A	155,00	125,00	140,02	143,68	27.6.2005	15,7	5.980	859.221	156,7
HRDH-R-A	150,00	105,00	132,80	130,17	30.6.2005	14,5	25.713	3.346.970	111,9
HUPZ-R-A	1.000,00	451,00	650,00	763,72	27.6.2005	30,0	17.240	13.166.565	333,7
IGH-R-A	2.999,00	1.601,00	2.000,00	2.177,92	30.6.2005	25,0	29.762	64.819.351	317,2
INDG-R-A	525,00	415,01	460,01	481,73	24.2.2005	18,0	1.644	791.965	57,5
JDBA-R-A	5.500,00	3.809,00	4.500,00	4.416,03	30.6.2005	18,3	2.589	11.433.097	163,8
JDPL-R-A	499,99	250,00	288,00	325,11	30.6.2005	-15,3	89.840	29.208.276	471,4
JDTT-R-A	199,00	130,00	184,17	165,77	15.3.2005	31,7	35.858	5.944.338	787,2
JMNC-R-A	19.000,00	12.001,00	14.000,00	15.324,15	27.6.2005	7,7	80	1.225.932	309,8
JNAF-R-A	2.570,00	1.380,00	1.850,00	2.059,38	30.6.2005	22,5	11.130	22.920.865	1.374,3
KABA-P-A	70,00	60,00	60,00	65,00	15.6.2005	-50,0	32	2.080	0,6
KABA-R-A	177,50	121,00	155,00	136,99	29.6.2005	10,7	80.041	10.965.137	103,8
KBZ-R-A	185,21	79,00	170,00	135,89	30.6.2005	70,0	43.986	5.977.166	224,4

Symbol	High	Low	Last	Average	Date	Net change	Volume	Turnover	Market Cap.
KNZM-R-A	3.050,00	2.500,00	3.050,00	2.825,56	24.6.2005	22,0	494	1.395.826	384,7
KODT-P-A	500,00	390,00	405,00	462,52	24.5.2005	1,3	2.675	1.237.238	12,4
KODT-R-A	650,00	415,01	415,01	540,50	28.6.2005	-7,8	1.065	575.630	30,4
KOEI-R-A	310,00	154,00	210,00	225,42	30.6.2005	35,5	466.029	105.050.232	528,6
KRAS-R-A	580,00	345,00	440,01	448,37	30.6.2005	27,5	90.778	40.702.533	604,4
LEDO-R-A	951,00	951,00	951,00	951,00	30.5.2005	5,7	6	5.706	209,4
LLRB-R-A	200,00	121,00	183,98	154,98	21.6.2005	51,9	5.728	887.699	23,4
LPML-R-A	100,00	100,00	100,00	100,00	22.3.2005	0,0	100	10.000	7,1
LRH-R-A	1.950,00	1.950,00	1.950,00	1.950,00	8.2.2005	25,8	10	19.500	590,1
LURA-R-A	350,00	240,00	345,00	323,40	30.6.2005	21,1	6.800	2.199.111	1.035,0
MAIS-R-A	165,00	140,00	150,00	156,39	3.6.2005	-9,1	1.966	307.454	1.538,6
MDKA-R-A	8.300,00	7.505,10	7.920,00	7.940,83	29.6.2005	-4,6	7.070	56.141.642	239,1
MDPL-R-A	86,00	84,00	86,00	84,27	7.6.2005	2,4	9.463	797.464	13,4
MLNR-R-A	325,00	325,00	325,00	325,00	18.4.2005	0,0	112	36.400	63,5
MMBA-R-A	650,00	506,00	570,00	546,84	21.6.2005	14,0	783	428.176	182,3
PBZ-R-A	700,00	485,03	560,00	557,65	30.6.2005	11,8	49.966	27.863.535	9.329,6
PLAG-R-A	2.950,00	1.880,00	2.100,00	2.382,12	30.6.2005	12,0	6.866	16.355.646	1.147,3
POBA-R-A	220,00	100,00	165,00	183,56	27.6.2005	29,9	107.653	19.760.529	52,8
PTKM-R-A	115,00	60,02	69,50	84,45	30.6.2005	-13,1	835.636	70.572.942	171,8
RIBA-R-A	375,00	280,00	320,00	325,28	10.6.2005	10,3	20.101	6.538.504	4.237,6
RIZO-R-A	175,00	150,00	150,00	157,75	25.4.2005	-50,0	129	20.350	20,4
SDBA-R-A	140,00	130,00	140,00	133,33	23.6.2005	0,0	150	20.000	33,8
SSNC-P-A1	500,01	414,00	500,00	465,27	22.3.2005	25,0	104	48.388	9,1
TDZ-R-A	2.200,00	2.022,72	2.055,00	2.107,49	27.6.2005	-7,6	373	786.093	667,5
THNK-R-A	1.800,00	1.120,21	1.300,00	1.554,25	30.6.2005	0,0	3.293	5.118.160	246,3
TISK-R-A	100,00	100,00	100,00	100,00	8.6.2005	0,0	84	8.400	238,7
TLM-R-A	50,00	30,00	50,00	35,12	30.6.2005	42,9	1.374	48.257	92,0
TNPL-R-A	4.010,00	1.899,99	2.789,00	3.095,57	30.6.2005	32,8	45.001	139.303.642	1.747,0
TRFM-R-A	1.120,00	1.016,00	1.120,00	1.023,76	30.6.2005	10,2	9.915	10.150.544	40,3
ULPL-R-A	2.799,00	1.400,00	1.520,00	1.902,32	29.6.2005	3,4	14.409	27.410.503	186,6
ULJN-R-A	290,00	52,91	60,00	73,44	28.6.2005	-70,0	13.769	1.011.143	134,2
VDKT-R-A	450,00	201,01	330,00	302,93	25.5.2005	57,1	19.541	5.919.638	114,1
ZABA-P-B	4.000,00	2.520,00	3.450,00	3.342,56	29.6.2005	38,0	501	1.674.624	39,1
ZABA-R-A	4.900,00	3.017,00	3.749,99	3.683,21	30.6.2005	13,6	11.752	43.285.132	10.776,0
ZAPI-R-A	4.100,00	2.700,00	3.200,00	3.570,78	30.6.2005	-17,9	2.546	9.091.217	1.985,4
Parallel Market									
CHAG-R-A	1.390,00	1.390,00	1.390,00	1.390,00	22.2.2005	49,5	5	6.950	175,1
GKBA-P-A	140,00	81,00	100,00	108,65	24.6.2005	25,0	2.775	301.510	22,0
HBRL-R-A	170,00	168,00	170,00	169,58	25.4.2005	70,0	441	74.786	89,3
HIMR-R-A	242,00	140,00	242,00	205,11	21.3.2005	42,4	3.289	674.594	153,9
HRBC-R-A	306,00	155,00	240,00	243,83	29.6.2005	54,8	51.515	12.560.706	242,9
KAPI-R-A	1.900,00	1.700,00	1.804,59	1.802,84	30.6.2005	0,0	1.152	2.076.869	922,6
KODS-R-A	25,00	10,00	25,00	20,35	17.3.2005	150,0	1.099	22.365	2,7
KORF-R-A	176,00	117,50	140,00	167,74	30.6.2005	23,9	80.441	13.492.841	1.135,9
MLDN-R-A	300,00	300,00	300,00	300,00	15.4.2005	275,0	25	7.500	28,8
PRFC-R-A	90,00	70,00	76,00	78,92	24.6.2005	4,1	2.754	217.332	297,4
PUNT-R-A	70,00	5,00	13,00	16,09	30.6.2005	-74,0	46.161	742.768	3,5
RIVP-R-A	375,00	221,10	285,00	303,02	30.6.2005	29,5	59.360	17.987.531	1.041,3
SLBA-R-A	2.200,00	1.827,00	1.860,10	2.006,69	24.6.2005	-1,6	978	1.962.539	530,0
SLPF-R-A	64,00	48,90	49,00	58,98	9.6.2005	6,5	39.875	2.351.679	164,0

Symbol	High	Low	Last	Average	Date	Net change	Volume	Turnover	Market Cap.
SNHO-R-A	255,00	110,00	115,00	202,01	28.6.2005	-32,4	48.332	9.763.460	388,4
SUNH-R-A	150,00	82,05	127,98	109,52	30.6.2005	58,0	156.955	17.189.312	423,7
VLBT-R-A	18,00	12,50	18,00	14,43	16.6.2005	29,5	521	7.519	61,3
ZITP-R-A	190,00	190,00	190,00	190,00	1.3.2005	0,0	469	89.110	20,8
ZLAR-R-A	300,00	93,40	147,05	182,87	21.6.2005	47,1	37.021	6.769.952	81,2

2.5. Bonds performance

(all prices in % of par value, turnover in Kunas)

	High	Low	Last	Date	Volume	Turnover
Regular trades						
AGKR-O-074A	107,50	107,50	107,50	13.5.2005	5.000	39.374
DAB-O-05CA	104,80	103,60	103,60	13.4.2005	2.853.000	22.126.748
FNOI-D-057A	99,58	96,45	99,58	15.6.2005	269.297	19.559
FNOI-D-061A	94,87	92,18	94,87	15.6.2005	394.492	27.335
FNOI-D-067A	90,52	88,16	90,48	16.6.2005	394.492	26.109
FNOI-D-071A	86,57	84,26	86,20	16.6.2005	394.492	24.936
FNOI-D-077A	82,18	80,58	82,18	16.6.2005	269.297	16.256
FNOI-D-081A	80,00	77,02	80,00	16.6.2005	273.385	15.761
FNOI-D-087A	74,63	73,64	74,63	16.6.2005	269.297	14.817
FNOI-D-091A	71,11	70,38	71,11	16.6.2005	269.297	14.142
FNOI-D-097A	67,80	67,31	67,80	16.6.2005	269.297	13.508
FNOI-D-101A	64,72	64,33	64,72	16.6.2005	269.297	12.893
FNOI-D-107A	61,60	61,49	61,60	16.6.2005	269.297	12.315
FNOI-D-111A	58,81	58,65	58,67	16.6.2005	269.297	11.755
FNOI-D-117A	56,24	55,92	55,93	16.6.2005	269.297	11.227
FNOI-D-121A	53,75	53,27	53,29	16.6.2005	269.297	10.716
FNOI-D-127A	51,40	50,78	50,79	16.6.2005	269.297	10.234
FNOI-D-131A	49,12	48,38	48,39	16.6.2005	269.297	9.767
FNOI-D-137A	46,98	46,13	46,14	16.6.2005	269.297	9.330
FNOI-D-141A	44,90	43,95	43,96	16.6.2005	269.297	8.905
FNOI-D-147A	42,95	41,90	41,91	16.6.2005	269.297	8.507
FNOI-D-151A	41,04	39,92	39,93	16.6.2005	269.297	8.119
FNOI-D-157A	39,26	38,06	38,07	16.6.2005	269.297	7.756
FNOI-D-161A	37,52	36,26	36,26	15.6.2005	269.297	7.402
FNOI-D-167A	35,87	34,56	34,57	16.6.2005	269.297	7.069
FNOI-D-171A	34,29	32,93	32,94	16.6.2005	269.297	6.748
FNOI-D-177A	32,79	31,39	31,40	16.6.2005	269.297	6.445
FNOI-D-181A	31,34	29,91	29,92	16.6.2005	269.297	6.152
FNOI-D-187A	29,97	28,52	28,53	16.6.2005	269.297	5.876
FNOI-D-191A	28,65	27,17	27,18	16.6.2005	269.297	5.609
FNOI-D-197A	27,40	25,90	25,91	16.6.2005	269.297	5.358
GDKC-O-116A	100,05	100,05	100,05	31.5.2005	770.000	715.358
HYBA-O-086A	102,40	100,90	102,40	5.5.2005	631.000	637.510
PLVA-O-115A	100,45	99,20	100,05	31.5.2005	826.500	6.062.871
PODR-O-072A	100,25	100,25	100,25	19.1.2005	30.000	225.865
RHMF-O-077A	101,60	101,55	101,60	29.6.2005	660.000	4.917.872
RHMF-O-085A	102,70	100,15	101,20	29.6.2005	54.741.634	55.638.793

	High	Low	Last	Date	Volume	Turnover
RHMF-O-08CA	111,60	110,60	111,60	17.6.2005	812.800	6.688.009
RHMF-O-103A	104,80	101,50	103,95	17.6.2005	23.882.597	24.752.110
RHMF-O-125A	118,00	113,30	117,80	23.6.2005	2.506.875	21.863.996
RHMF-O-142A	110,10	105,00	110,10	24.6.2005	2.435.400	19.573.634
RHMF-O-19BA	109,50	104,35	109,50	23.6.2005	1.427.230	11.302.869
TOTAL					99.771.322	174.889.615
Reported trades*						
DAB-O-05CA	104,50	102,50	102,50	23.6.2005	6.542.547	50.051.635
RHMF-O-077A	101,60	100,20	101,35	10.6.2005	23.250.000	174.115.973
RHMF-O-085A	102,35	100,25	101,65	14.6.2005	50.000.000	50.680.000
RHMF-O-08CA	112,25	110,60	111,75	27.6.2005	8.000.000	65.639.451
RHMF-O-103A	104,75	102,40	104,30	27.6.2005	349.450.000	362.532.150
RHMF-O-125A	118,15	114,65	117,90	29.6.2005	33.920.000	293.602.585
RHMF-O-142A	109,90	105,30	109,60	29.6.2005	32.000.000	255.473.390
RHMF-O-19BA	109,80	102,80	109,80	28.6.2005	25.650.000	202.543.182
TOTAL					528.812.547	1.454.638.365
Institutional trades**						
AGKR-O-074A	107,00	107,00	107,00	8.6.2005	500.000	3.919.404
ATGR-O-077A	100,40	99,30	100,05	27.6.2005	3.274.000	24.289.074
BLSC-O-091A	100,45	99,74	100,45	18.5.2005	2.240.000	16.707.941
BNAI-O-22CA	116,13	115,05	116,13	18.1.2005	3.362.000	29.399.974
DAB-O-05CA	105,00	103,20	103,20	15.6.2005	33.832.276	260.561.586
FNOI-D-087A	81,19	81,19	81,19	6.6.2005	617.799	36.733
FNOI-D-091A	78,47	78,47	78,47	6.6.2005	617.799	35.502
FNOI-D-097A	75,88	75,88	75,88	6.6.2005	617.799	34.330
FNOI-D-101A	73,34	73,34	73,34	6.6.2005	617.799	33.181
FNOI-D-107A	70,92	70,92	70,92	6.6.2005	617.799	32.086
FNOI-D-111A	68,54	68,54	68,54	6.6.2005	617.799	31.010
FNOI-D-117A	66,28	66,28	66,28	6.6.2005	617.799	29.987
FNOI-D-121A	64,05	64,05	64,05	6.6.2005	617.799	28.978
GDKC-O-116A	100,00	98,70	99,85	23.5.2005	22.745.000	21.005.874
GDZD-O-119A	105,40	102,90	105,40	7.6.2005	4.288.000	33.185.935
HYBA-O-086A	102,20	99,60	101,40	6.6.2005	47.030.000	47.615.024
PLVA-O-115A	100,40	99,25	100,05	29.6.2005	7.766.500	57.338.475
PODR-O-072A	100,20	99,30	100,15	27.6.2005	14.625.000	108.619.083
RHMF-O-077A	101,65	99,60	101,45	29.6.2005	109.940.500	825.652.359
RHMF-O-085A	102,50	100,10	101,40	30.6.2005	886.612.800	901.627.530
RHMF-O-08CA	112,40	110,15	112,00	24.6.2005	51.855.500	428.528.564
RHMF-O-103A	104,85	100,01	104,00	30.6.2005	1.991.304.000	2.064.992.468
RHMF-O-125A	118,20	114,25	118,00	28.6.2005	159.297.500	1.373.754.398
RHMF-O-142A	110,20	104,90	109,55	30.6.2005	238.878.500	1.905.443.426
RHMF-O-19BA	110,15	99,72	109,75	28.6.2005	218.092.800	1.716.482.996
TOTAL					3.800.586.768	9.819.385.918
BONDS TOTAL					4.429.170.637	11.448.913.898

*Reported trades are trades with bonds greater than 3,000,000 HRK in accordance with the Zagreb Stock Exchange Rules.

**Institutional trades are trades reported to the Exchange by institutional investors in accordance with Securities Law.

2.6. Certificates performance

(All prices in % of par value, turnover in Kunas)

Symbol	High	Low	Last	Date	Volume	Turnover
RHMF-A-A	80,20	80,00	80,00	2.5.2005	842.620	675.751

2.7. Commercial papers performance

(All prices in % of par value, turnover in Kunas)

Symbol	High	Low	Last	Date	Volume	Turnover
Institutional trades						
MDKA-M-528A	99,24	99,24	99,24	29.4.2005	300.000	297.720

2.8. Top 10 Members by Equity Turnover

Rang	Member
1	Zagrebačka banka d.d.
2	Auctor d.o.o.
3	Fima vrijednosnice d.o.o.
4	Erste vrijednosni papiri d.o.o.
5	Raiffeisenbank Austria d.d.
6	InterFinance d.o.o.
7	Ilirika vrijednosni papiri d.o.o.
8	Privredna banka Zagreb d.d.
9	Hypo Alpe-Adria-Bank d.d.
10	I.C.F. d.o.o.

2.9. Top 10 Members by Bonds Turnover

Rang	Member
1	Interkapital vrijednosni papiri d.o.o.
2	I.C.F. d.o.o.
3	Erste vrijednosni papiri d.o.o.
4	Raiffeisenbank Austria d.d.
5	Privredna banka Zagreb d.d.
6	Zagrebačka banka d.d.
7	CROBA vrijednosnice d.o.o.
8	HVB Splitska banka d.d.
9	TO ONE brokeri d.o.o.
10	Fima vrijednosnice d.o.o.

2.10. Top 10 Members by Total Turnover

Rang	Member
1	Interkapital vrijednosni papiri d.o.o.
2	Zagrebačka banka d.d.
3	Erste vrijednosni papiri d.o.o.
4	Raiffeisenbank Austria d.d.
5	I.C.F. d.o.o.
6	Auctor d.o.o.
7	Fima vrijednosnice d.o.o.
8	InterFinance d.o.o.
9	Privredna banka Zagreb d.d.
10	Ilirika vrijednosni papiri d.o.o.

2.11. Best performing stocks

(All prices in Kunas)

Symbol	Second half of 2004	First half of 2005	%
ADHT-R-A*	120,00	506,00	321,7
GHPA-R-A	100,00	390,00	290,0
MLDN-R-A	80,00	300,00	275,0
KODS-R-A*	10,00	25,00	150,0
EXCL-R-A*	65,00	135,00	107,7
KBZ-R-A	99,98	170,00	70,0
HBRL-R-A	100,00	170,00	70,0
HICZ-R-B	240,00	385,00	60,4
SUNH-R-A	81,00	127,98	58,0
VDKT-R-A	210,00	330,00	57,1

*comparison is done with first price in 2005

2.12. Under performing stocks

(All prices in Kunas)

Symbol	Second half of 2004	First half of 2005	%
PUNT-R-A*	50,00	13,00	-74,0
ULJN-R-A*	200,00	60,00	-70,0
RIZO-R-A	300,00	150,00	-50,0
KABA-P-A	119,99	60,00	-50,0
SNHO-R-A	170,00	115,00	-32,4
FNVC-R-A	220,00	155,00	-29,5
ZAPI-R-A	3.900,00	3.200,00	-17,9
AUHR-R-A*	5.000,00	4.200,00	-16,0
JDPL-R-A	340,00	288,00	-15,3
PTKM-R-A	80,00	69,50	-13,1

*comparison is done with first price in 2005

2.13. Financial Ratios

(Price, earnings and dividend in Kunas)

Symbol	Price	EPS 2004	P/E	Dividend for 2004	Dividend Yield
Official Market					
CROS-R-A	5.299,99	325,45	16,3	128*	2,4%
ISTT-R-A	180,00	17,16	10,5	5,3	2,9%
PLVA-R-A	380,00	44,68	8,5	12	3,2%
PODR-R-A	280,00	17,84	15,7	5	1,8%
Market JDD					
ADHT-R-A	506,00	-13,18	-38,4	-	-
ARNT-R-A	168,04	0,65	259,9	-	-
ATLS-R-A	84,00	0,65	129,1	-	-
ATPL-R-A	593,00	78,45	7,6	-	-
AUHR-R-A	4.200,00	1.197,15	3,5	163,91*	3,9%
BD62-R-A	225,00	2,38	94,7	7	3,1%
BDMR-R-A	1.000,00	25,48	39,2	49,97*	5,0%
BLSC-R-A	330,00	12,24	27,0	-	-
BRAT-R-A	56,00	-6,30	-8,9	-	-
CEBA-R-A	410,00	37,96	10,8	20*	4,9%
DABA-R-A	700,00	62,72	11,2	-	-
DLMC-R-A	700,00	3,58	195,4	-	-
ELKA-R-A	105,00	-155,66	-0,7	8,79*	8,4%
ELPR-R-A	200,01	1,63	122,4	12	6,0%
ERNT-R-A	1.850,00	166,25	11,1	18	1,0%
EXCL-R-A	135,00	8,82	15,3	-	-
EXPD-R-A	270,00	-66,88	-4,0	-	-
FNVC-R-A	155,00	29,30	5,3	-	-
FRNK-R-A	1.150,00	177,59	6,5	40,02*	3,5%
GHPA-R-A	390,00	481,30	0,8	-	-
GPDU-R-A	230,00	28,09	8,2	-	-
HDEL-R-A	110,00	0,99	111,0	-	-
HICZ-R-B	385,00	6,79	56,7	-	-
HRDH-R-A	132,80	-29,60	-4,5	-	-
HUPZ-R-A	650,00	63,64	10,2	21*	3,2%
IGH-R-A	2.000,00	122,25	16,4	37,1*	1,9%
INDG-R-A	460,01	-785,43	-0,6	-	-
JDBA-R-A	4.500,00	294,89	15,3	-	-
JDPL-R-A	288,00	72,92	3,9	-	-
JMNC-R-A	14.000,00	1.767,42	7,9	295,64*	2,1%
JNAF-R-A	1.850,00	40,63	45,5	-	-
KABA-R-A	155,00	7,28	21,3	-	-
KBZ-R-A	170,00	8,89	19,1	-	-
KNZM-R-A	3.050,00	363,14	8,4	-	-
KODT-R-A	415,01	105,67	3,9	37,24	9,0%
KOEI-R-A	210,00	2,95	71,1	-	-
KRAS-R-A	440,01	22,55	19,5	15	3,4%
LEDO-R-A	951,00	69,35	13,7	26,372*	2,8%
LLRB-R-A	183,98	3,92	46,9	-	-

Symbol	Price	EPS 2004	P/E	Dividend for 2004	Dividend Yield
LPML-R-A	100,00	1,14	87,4	-	-
LRH-R-A	1.950,00	41,97	46,5	-	-
LURA-R-A	345,00	11,97	28,8	-	-
MDKA-R-A	7.920,00	106,48	74,4	102,2*	1,3%
MDPL-R-A	86,00	0,33	263,3	-	-
MLNR-R-A	325,00	11,70	27,8	16*	4,9%
MMBA-R-A	570,00	85,22	6,7	30,04*	5,3%
PBZ-R-A	560,00	40,68	13,8	16,32	2,9%
PLAG-R-A	2.100,00	144,28	14,6	72*	3,4%
POBA-R-A	165,00	-82,63	-2,0	-	-
PTKM-R-A	69,50	-15,73	-4,4	-	-
RIBA-R-A	320,00	21,84	14,6	18,91	5,9%
RIZO-R-A	150,00	10,81	13,9	20*	13,3%
SDBA-R-A	140,00	4,94	28,3	2,75	2,0%
TDZ-R-A	2.055,00	187,59	11,0	-	-
THNK-R-A	1.300,00	97,60	13,3	74,61*	5,7%
TLM-R-A	50,00	-118,91	-0,4	-	-
TNPL-R-A	2.789,00	14,27	195,5	-	-
ULPL-R-A	1.520,00	172,73	8,8	29,9	2,0%
ULJN-R-A	60,00	-43,96	-1,4	-	-
VDKT-R-A	330,00	21,24	15,5	-	-
ZABA-R-A	3.749,99	374,19	10,0	-	-
ZAPI-R-A	3.200,00	257,97	12,4	77	2,4%

*dividend for 2003

3. Major Events

- 24.6.2005 VALAMAR HOLDING d.d. common stocks (ZSE symbol: VLHO -R-A) were listed on Parallel Market.
- 7.6.2005 Kaštelanski staklenici d.d. common stocks (ZSE symbol: KSST-R-A) were listed on JDD Market.
- 20.5.2005 PODRAVKA d.d. relased that General Meeting will be held on 30.06.2005.
- 16.5.2005 Croatia osiguranja d.d. released its financial results for the first quarter of 2005.
- 16.5.2005 Istraturist d.d. common stocks (ZSE symbol: ISTT-R-A) were listed on Official Market.
- 12.5.2005 Terra Firma d.d. common stocks (ZSE symbol: TRFM-R-A) were listed on JDD Market.
- 5.5.2005 PLIVA d.d. relased that General Meeting will be held on 14.06.2005.
- 5.5.2005 PODRAVKA d.d. released its financial results for the first quarter of 2005.
- 5.5.2005 PLIVA d.d. released its financial results for the first quarter of 2005.
- 3.5.2005 Agrokori d.d. released its financial results for year 2005.
- 14.4.2005 Mediteranska plovdba d.d. common stocks (ZSE symbol: MDPL -R-A) were listed on JDD Market.
- 31.3.2005 CROATIA osiguranje d.d. released its financial results for the year 2004.
- 15.3.2005 JADRAN-TURIST ROVINJ d.d. and ANITA d.d. common and preffered stocks (ZSE symbols: JDTT-R-A, ANTA-R-A i ANTA-P-A) were delisted from Market JDD.

- 15.3.2005 MAISTRA d.d. common stocks (ZSE symbol: MAIS-R-A) were listed on Market JDD.
- 10.3.2005 Hypo Alpe-Adria-Grupa released its financial results for the year 2004.
- 9.3.2005 Government bond due on March 8, 2010 (ZSE symbol: RHMF-O-103A) started trading in Official Market. Nominal value of the issue is 3 billion Kunas.
- 8.3.2005 Vjesnik d.d share capital is increased to amount of 106.168.300 Kunas.
- 2.3.2005 PLIVA d.d. released its financial results for the year 2004.
- 2.3.2005 Tekstilni kombinat Zagreb d.d. common stocks (ZSE symbol: TKZG-R-A) were delisted from Market JDD.
- 2.3.2005 Moslavka d.d. common stocks (ZSE symbol: MSLK-R-A) were delisted from Market JDD.
- 2.3.2005 Hoteli Srebreno d.d. common stocks (ZSE symbol: HSRE-R-A) were delisted from Market JDD.
- 8.2.2005 ZVIJEZDA d.d. (ZSE symbol: ZVZD-R-A), IPK TVORNICA ULJA ČEPIN d.d. (ZSE symbol: IPKT-R-A) and IPK KANDIT d.d. (ZSE symbol: IPKK-R-A) common stocks were listed on Parallel Market.
- 8.2.2005 Pounje d.d. common stocks (ZSE symbol: PUNT-R-A) were listed on Parallel Market.
- 7.2.2005 General assemblies of companies Anita d.d. and Jadran-turist d.d. approved merger of these two companies into new company named Maistra d.d.
- 4.2.2005 Hoteli Srebreno d.d. HSRE-R-A common stocks (ZSE symbol: HSRE-R-A) were listed on Market JDD.
- 3.2.2005 Ilirija d.d. share capital is increased to amount of 97.260.540 Kunas.
- 26.1.2005 Hypo Alpe-Adria-Bank d.d. share capital is increased to amount of 1.296.762.000 Kunas
- 20.1.2005 Kerametal d.d. common stocks (ZSE symbol: KRMT-R-A) were delisted from Market JDD.
- 17.1.2005 Belišće d.d. corporate bonds due on January 14, 2009. (ZSE symbol BLSC-O-091A) started trading in Official Market. Nominal value of the issue is 8 million Euros.

4. Prices and Volumes for the Most Active Stocks

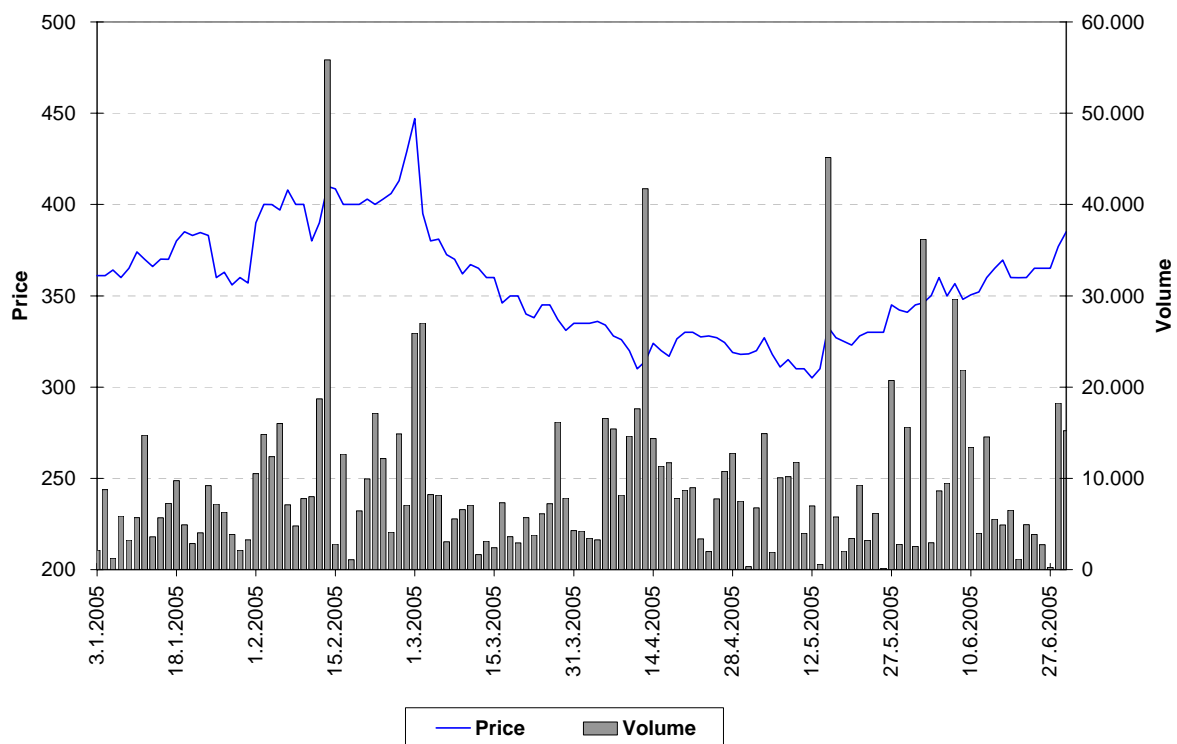


Chart 5: Pliva d.d.

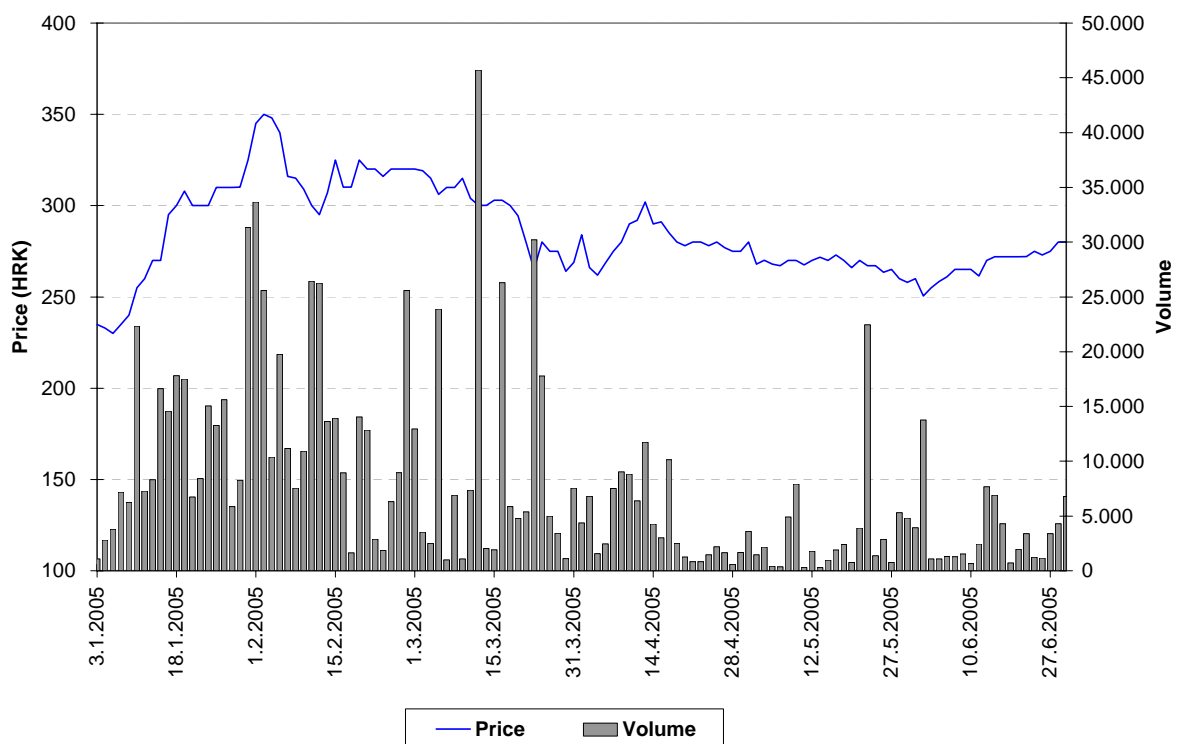


Chart 6: Podravka d.d.

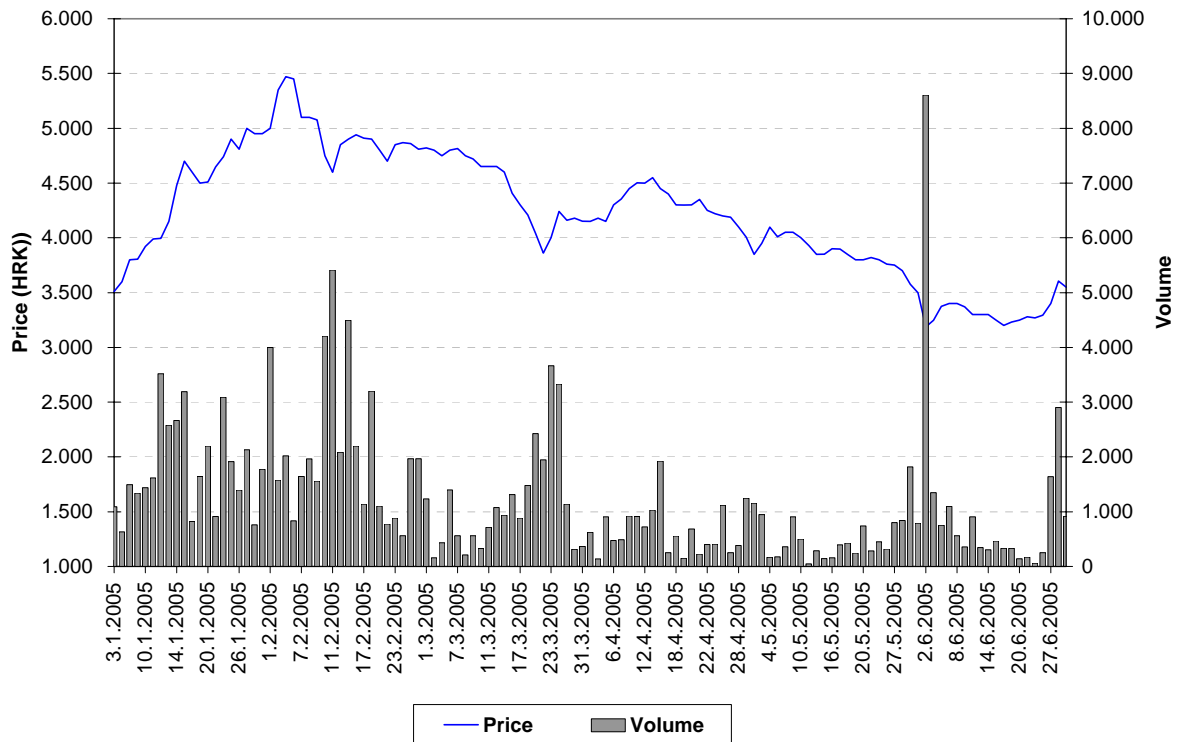


Chart 7: ADRIS GRUPA d.d. preferred stocks

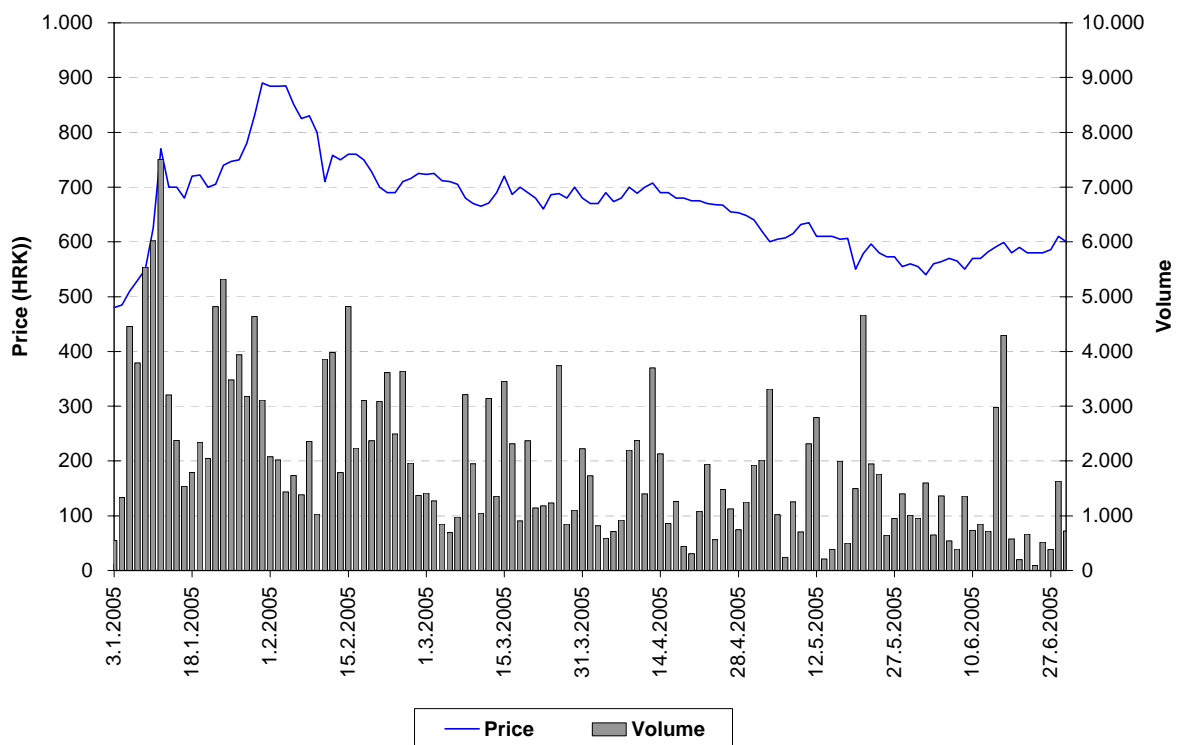


Chart 8: Atlantska plovidba d.d.

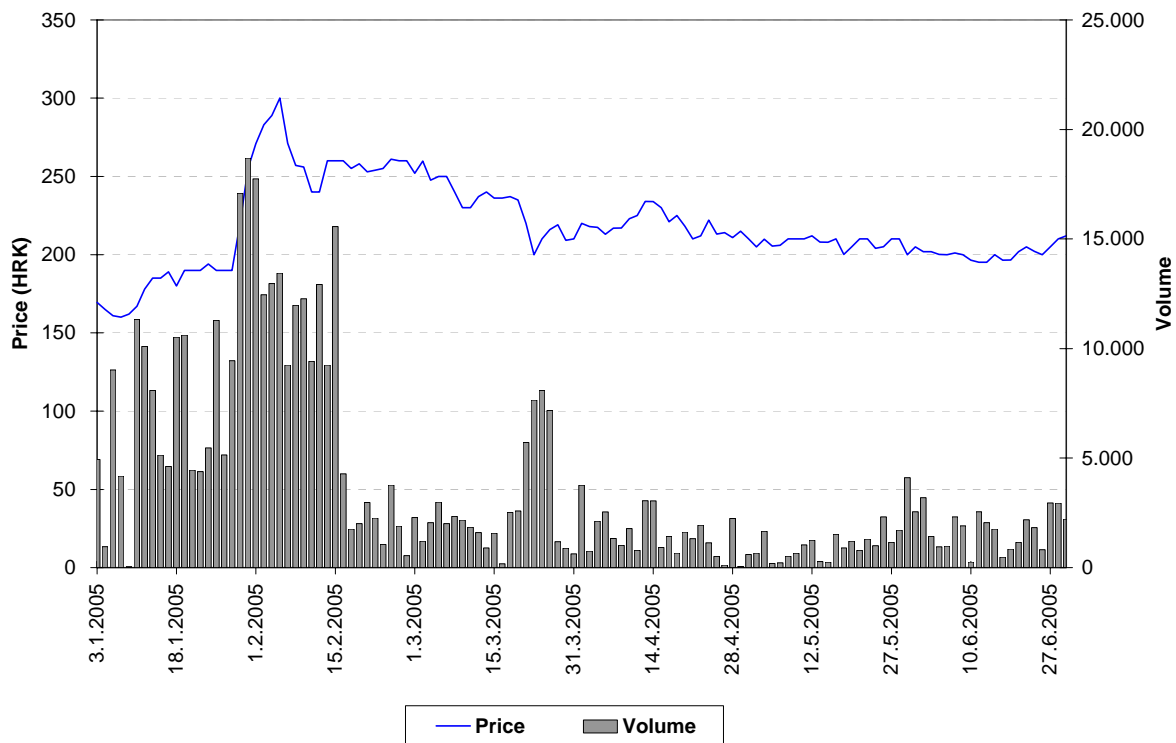


Chart 9: Končar Elektroindustrija d.d.

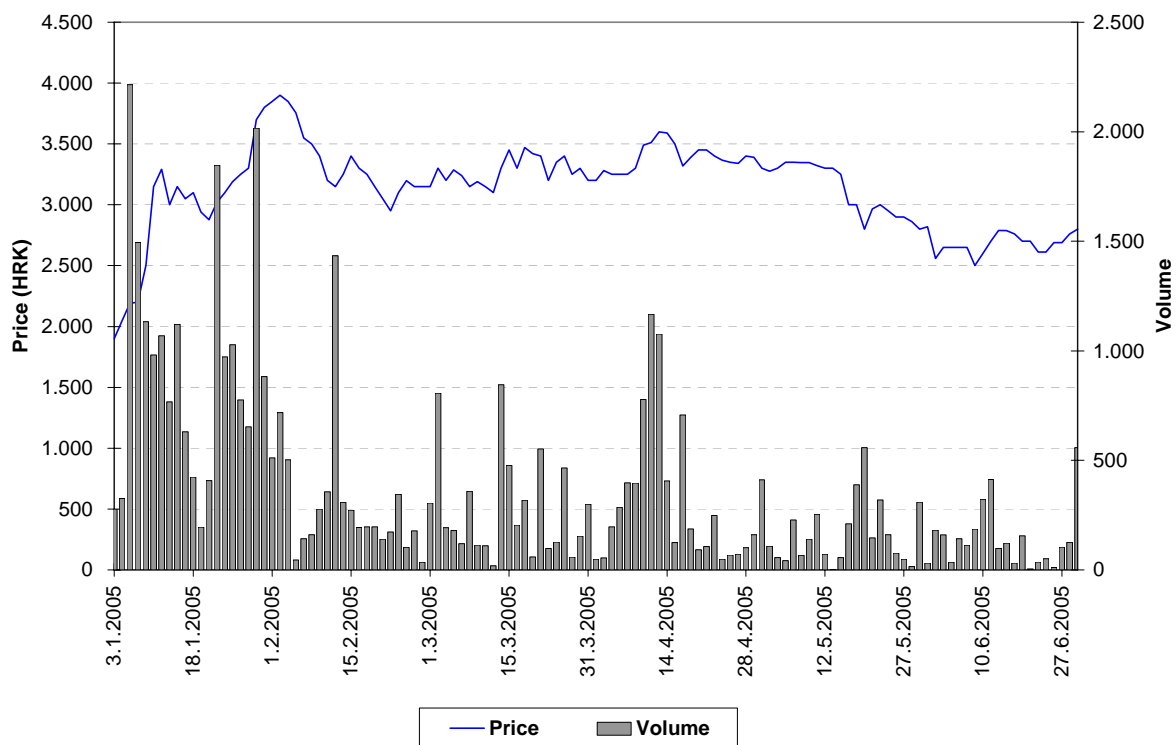


Chart 10: Tankerska plovidba d.d.

5. Listed Companies

Symbol	Company name	Shares outstanding	Nominal value
Official Market			
Common stocks			
CROS-R-A	Croatia osiguranje d.d.	307.598	1400 HRK
ISTT-R-A	Istraturist Umag d.d.	4.674.995	100 HRK
PLVA-R-A	PLIVA d.d.	18.592.648	100 HRK
PODR-R-A	Podravka prehrambena industrija d.d.	5.420.003	300 HRK
Preffered stocks			
CROS-P-A	Croatia osiguranje d.d.	8.750	1400 HRK
JDD Market			
Common stocks			
ADCH-R-A	Adriachem d.d.	623.578	300 HRK
ADHT-R-A	Adriatic d.d.	337.480	200 HRK
ADPL-R-A	AD Plastik d.d.	2.939.709	100 HRK
ADRS-R-A	ADRIS GRUPA d.d.	961.590	100 HRK
AMDN-R-A	Apartmani Medena d.d.	765.376	300 HRK
ARNT-R-A	Arenaturist d.d.	2.182.500	300 HRK
ATLS-R-A	Atlas turistička agencija d.d.	1.910.008	100 HRK
ATPL-R-A	Atlantska plovidba d.d.	1.362.260	300 HRK
AUHR-R-A	Auto-Hrvatska d.d.	17.885	3700 HRK
BD62-R-A	Badel 1862 d.d.	752.106	300 HRK
BDMR-R-A	Brodmerkur d.d.	99.331	1900 HRK
BLSC-R-A	Belišće d.d.	1.164.312	300 HRK
BRAT-R-A	Bratstvo d.d.	156.190	200 HRK
CEBA-R-A	Centar banka d.d.	221.749	400 HRK
CHBL-R-A	Chromos boje i lakovi d.d.	287.740	300 HRK
CRAL-R-A	Croatia Airlines d.d.	4.349.279	200 HRK
CRBT-R-A	Croatia Baterija d.d.	180.090	300 HRK
DABA-R-A	Nova banka d.d.	2.766.398	200 HRK
DALS-R-A	Dalma d.d.	1.225.790	100 DEM
DKVS-R-A	Đakovština d.d.	793.021	300 HRK
DLKV-R-A	Dalekovod	2.293.812	100 HRK
DLMC-R-A	Dalmacijacement RMC Group d.d.	1.700.000	700 HRK
DMUS-R-A	Domus d.d.	428.6762	100 HRK
DRNJ-R-A	Drvenjača d.d.	223.990	300 HRK
DTR-R-A	Domaća tvornica rublja d.d.	107.850	100 DEM
ELKA-R-A	EIG d.d.	1.588.320	300 HRK
ELKP-R-A	Elektroprojekt d.d.	89.800	100 DEM
ELPR-R-A	Elektropromet d.d.	334.860	300 HRK
ERNT-R-A	Ericsson Nikola Tesla d.d.	1.331.650	200 HRK
EXCL-R-A	Excelsior d.d.	474.947	100 HRK
EXPD-R-A	Exportdrvo d.d.	159.064	400 HRK
FNVC-R-A	Finvest Corp d.d.	617.751	400 HRK
FRNK-R-A	Franck d.d.	427.170	600 HRK
GHPA-R-A	Grand Hotel Park d.d.	139.895	400 HRK

Symbol	Company name	Shares outstanding	Nominal value
GPDU-R-A	GP Dubrovnik d.d.	128.835	300 HRK
HBEL-R-A	Hotel Bellevue d.d.	43.834	300 HRK
HCRC-R-A	Hoteli Croatia d.d.	1.079.040	100 HRK
HDEL-R-A	Hidroelektra niskogradnja d.d.	623.881	100 HRK
HDUZ-R-A	Hotel Dubrovnik d.d.	267.200	100 DEM
HICZ-R-B	Hotel Opera d.d.	869.876	200 HRK
HMAM-R-A	Hoteli Makarska d.d.	1.119.470	200 HRK
HMLN-R-A	Hoteli Mlini d.d.	780.364	100 HRK
HMST-R-A	Hoteli Maestral d.d.	515.720	200 HRK
HPDG-R-A	Hoteli Podgora d.d.	366.250	100 DEM
HRDH-R-A	Hrvatski Duhani d.d.	842.807	300 HRK
HSTS-R-A	Hotel Split d.d.	36.323	3100 HRK
HTCP-R-A	Hoteli Tučepi d.d.	548.200	300 HRK
HUPZ-R-A	HUP Zagreb d.d.	513.333	400 HRK
IGH-R-A	Institut građevinarstva Hrvatske d.d.	158.580	400 HRK
IKBA-R-A	Istarska kreditna banka d.d.	57.487	1100 HRK
ILRA-R-A	Ilijija d.d.	249.386	390 HRK
INDG-R-A	Industrogradnja d.d.	125.072	2700 HRK
INKR-R-A	Lasselsberger industrija keramike i porucalana d.d.	1.451.886	100 HRK
JDBA-R-A	Jadranska banka d.d.	36.400	2000 HRK
JDKM-R-A	Jadrnkamen d.d.	217.330	100 DEM
JDPL-R-A	Jadroplov d.d.	1.636.674	360 HRK
JMNC-R-A	Jamnica d.d.	22.126	3800 HRK
JNAF-R-A	Jadranski naftovod d.d.	742.846	2700 HRK
KABA-R-A	Karlovačka banka d.d.	669.795	100 HRK
KBZ-R-A	Kreditna banka Zagreb d.d.	1.319.945	100 HRK
KNZM-R-A	Konzum d.d.	126.127	1800 HRK
KODT-R-A	Končar-distributivni i specijalni transformatori d.d.	73.313	300 HRK
KOEI-R-A	Končar elektroindustrija d.d.	2.517.053	400 HRK
KOSK-R-A	Končar Sklopna postrojenja d.d.	68.842	300 HRK
KRAS-R-A	Kraš d.d.	1.373.621	400 HRK
KSST-R-A	Kaštelanski staklenici d.d.	113.593	2500 HRK
KTKS-R-A	Koteks d.d.	669.467	100 HRK
LANO-R-A	Laguna Novigrad d.d.	322.790	370 HRK
LEDO-R-A	Ledo d.d.	220.170	380 HRK
LKRI-R-A	Luka Rijeka d.d.	3.011.830	100 HRK
LLRB-R-A	Lola Ribar d.d.	127.139	400 HRK
LPML-R-A	Lipa Mill d.d.	70.833	720 HRK
LRH-R-A	Liburnia Riviera hoteli d.d.	302.641	3200 HRK
LURA-R-A	Lura d.d.	3.000.000	100 HRK
LVCV-R-A	Lavčević d.d.	465.656	300 HRK
MAGE-R-A	Marin Getaldić d.d.	180.608	50 DEM
MAIS-R-A	MAISTRA d.d.	10.257.393	-
MDKA-R-A	Medika d.d.	30.194	500 DEM
MDPL-R-A	Mediteranska plovidba d.d.	156.126	100 DEM
MLNR-R-A	Mlinar d.d.	195.409	400 HRK
MMBA-R-A	Međimurska banka d.d.	319.750	400 HRK
MSLK-R-A	Moslavka d.d.	191.732	200 HRK

Symbol	Company name	Shares outstanding	Nominal value
NVBA-R-A	Nava banka d.d.	101.610	400 HRK
PABA-R-A	Partner banka d.d.	891.000	100 HRK
PBZ-R-A	Privredna banka Zagreb d.d.	16.660.000	100 HRK
PLAG-R-A	Plava Laguna d.d.	546.318	1800 HRK
PLTO-R-A	PLUTO d.d.	87.440	400 HRK
POBA-R-A	Požeška banka d.d.	320.000	200 HRK
PRHN-RA	Prehrana d.d.	129.950	300 HRK
PTKM-R-A	Petrokemija d.d.	2.471.721	400 HRK
RIBA-R-A	Erste & Steiermarkische bank d.d.	13.242.478	100 HRK
RIZO-R-A	RIZ-ODAŠILJAČI d.d.	135.902	100 DEM
SDBA-R-A	BANKA SPLITSKO-DALMATINSKA d.d.	241.178	100 HRK
SLDM-R-A	Slobodna dalmacija d.d.	707.986	100 HRK
SLRS-R-A	Solaris d.d.	726.990	100 DEM
SSNC-R-A	Banka Sonic d.d.	61.800	500 HRK
TANG-R-A	TANG tvornica alata d.d.	113.874	600 HRK
TDZ-R-A	Tvornica duhana Zagreb d.d.	324.808	700 HRK
TEP-R-A	TEP Tvornica elektrotehničkih proizvoda d.d.	377.847	200 HRK
THNK-R-A	Tehnika d.d.	189.460	900 HRK
TISK-R-A	Tisak d.d.	2.386.587	100 HRK
TLM-R-A	TLM Tvornica lakih metala d.d.	1.840.082	300 HRK
TMPO-R-A	TEMPO d.d.	607.952	100 HRK
TNPL-R-A	Tankerska plovidba d.d.	626.385	600 HRK
TOZ-R-A	TOZ Penkala, Tvornica olovaka Zagreb d.d.	246.930	300 HRK
TRFM-R-a	TERRA FIRMA d.d.	36.000	1000 HRK
TSTR-R-A	Tekstilstroj d.d.	114.442	300 HRK
ULPL-R-A	Uljanik plovidba d.d.	122.756	400 HRK
ULJN-R-A	ULJANIK d.d.	2.236.253	300 HRK
UNPP-R-A	Unijapapir d.d.	19.210	1800 HRK
VDKT-R-A	Viadukt d.d.	345.820	300 HRK
VJSN-R-A	Vjesnik d.d.	1.061.683	100 HRK
ZABA-R-A	Zagrebačka banka d.d.	2.873.603	380 HRK
ZAPI-R-A	Zagrebačka pivovara d.d.	620.450	100 DEM
ZLJS-R-A	Željezara Split d.d.	113.216	1200 HRK
ZPKL-R-A	Zagrebačke pekarnice Klara d.d.	283.760	400 HRK
	JDD Market		
	Preffered stocks		
ADRS-P-A	ADRIS GRUPA d.d.	678.410	100 HRK
CRAL-P-A	Croatia Airlines d.d.	17.590	100 HRK
CRAL-P-A1	Croatia Airlines d.d.	6.762	100 HRK
CRAL-P-A2	Croatia Airlines d.d.	13.025	100 HRK
CRAL-P-A3	Croatia Airlines d.d.	7.356	100 HRK
CRAL-P-A4	Croatia Airlines d.d.	6.464	100 HRK
IKBA-P-A	Istarska kreditna banka d.d.	1.513	1100 HRK
KABA-P-A	Karlovačka banka d.d.	10.824	100 HRK
KODT-P-A	Končar-Distributivni i specijalni transformatori d	30.714	300 HRK
KOSK-P-A	Končar Sklopna postrojenja d.d.	40.718	300 HRK
PLAG-P-A	Plava Laguna d.d.	105.000	1000 HRK
SDBA-P-A	BANKA SPLITSKO-DALMATINSKA d.d.	66.680	100 HRK

Symbol	Company name	Shares outstanding	Nominal value
SSNC-P-A1	Banka Sonic d.d.	18.200	500 HRK
ZABA-P-B	Zagrebačka banka d.d.	11.325	540 HRK
	Parallel Market		
	Common stocks		
AGLG-R-A	AGROLAGUNA d.d.	28.487	2500 HRK
BLVD-R-A	Belvedere d.d.	349.080	300 HRK
CHAG-R-A	CHROMOS AGRO d.d.	125.977	500 HRK
CRLI-R-A	Croatia Lloyd d.d.	145.076	800 HRK
DKST-R-A	DK «STOLARIJA» d.d.	5.484	500 DEM
FRMC-R-A	Farmacija d.d.	16.835	1200 HRK
GHAD-R-A	Grand Hotel Adriatic d.d.	170.800	100 DEM
GKBA-R-A	Gospodarsko-kreditna banka d.d.	627.720	100 HRK
HARG-R-A	Hoteli Argentina d.d.	185.960	300 HRK
HBRL-R-A	Hoteli Brela d.d.	525.270	100 DEM
HIMR-R-A	Imperial d.d.	635.855	200 DEM
HPRK-R-A	Hotel Park d.d.	3.000	3000 HRK
HSRE-R-A	Hoteli Srebreno d.d.	482.000	100 HRK
HRBC-R-A	Rabac, ugostiteljstvo i turizam d.d.	1.012.220	100 DEM
IKOM-R-A	IKOM Industrija komunalne opreme i mjerila d.d.	78.142	100 DEM
IMES-R-A	Imes d.d.	53.276	100 DEM
IPKK-R-A	IPK KANDIT d.d.	543.490	100 HRK
IPKT-R-A	IPK TVORNICA ULJA ČEPIN d.d.	564.694	100 HRK
JLSA-R-A	Jelsa d.d.	1.057.758	100 HRK
JTMN-R-A	Jadran d.d. Tvornica metalnog namještaja	173.560	300 HRK
KAPI-R-A	Karlovačka pivovara d.d.	511.245	400 HRK
KMKA-R-A	Kemika d.d.	95.259	300 HRK
KODS-R-A	Kordun Slunj d.d.	106.427	100 HRK
KORF-R-A	DOM HOLDING d.d.	8.113.359	100 HRK
KRDN-R-A	Kordun d.d. Karlovac	256.320	100 DEM
KRMT-R-A	Kerametal d.d.	108.923	100 DEM
KRNA-R-A	Korana d.d.	200.406	200 HRK
LOVI-R-A	Lovinčić d.d.	419.506	200 HRK
MLDN-R-A	Mladina d.d.	96.098	300 HRK
MCML-R-A	MACROMEL d.d.	150.000	10000 HRK
MLDN-R-A	Mladina d.d.	96.098	300 HRK
MRNR-R-A	Mornar d.d.	52.510	100 DEM
MSLK-R-A	Moslavka d.d.	191.732	200 HRK
NACE-R-A	Našicecement d.d.	644.329	400 HRK
NMAZ-R-A	NAMA d.d.	230.422	1000 DEM
PRFC-R-A	PROFICIO d.d.	3.912.908	100 HRK
PSBA-R-A	Primus banka d.d.	101.700	500 HRK
PUNT-R-A	POUNJE Trikotaža d.d.	266.000	100 HRK
PZDL-R-A	Požeška dolina d.d.	120.339	100 DEM
RIVP-R-A	Riviera Holding d.d.	3.653.517	300 HRK
RTKO-R-A	Riječka tvornica konopa d.d.	130.260	200 HRK
SLBA-R-A	Slavonska banka d.d.	284.941	1300 HRK
SLPG-R-A	Solana Pag d.d.	75.846	100 DEM
SNHO-R-A	SN Holding d.d.	3.377.441	100 HRK

Symbol	Company name	Shares outstanding	Nominal value
SPTH-R-A	Svpetrvs hoteli d.d.	395.148	100 HRK
STBA-R-A	Splitska banka d.d.	3.634.783	100 HRK
SUNH-R-A	Sunčani Hvar d.d.	3.310.971	100 HRK
TRUM-R-A	Trgopromet Umag d.d.	214.072	100 HRK
VLHO-R-A	VALAMAR HOLDING d.d.	3.377.441	-
ZITP-R-A	Žitoproizvod d.d.	109.300	400 HRK
ZLAR-R-A	Zlatni rat d.d.	552.319	100 DEM
ZVZD-R-A	ZVIJEZDA d.d.	100.257	2000 HRK
Parallel Market			
Closed End Funds			
SLPF-R-A	Slavonski ZIF, d.d.	3.346.418	100 HRK
VLBT-R-A	Velebit – ZIF, d.d.	3.406.550	100 HRK
Parallel Market			
Preferred stocks			
GKBA-P-A	Gospodarsko-kreditna banka d.d.	220.000	100 HRK
SPTH-P-A	Svpetrvs hoteli d.d.	45.952	100 HRK

6. Listed Bonds

Symbol	Issuer	Nominal value	Issued volume	Interest	Maturity
Official Market					
AGKR-O-074A	AGROKOR d.d.	1 EUR	230.000.000	11%	3.4.2007
ATGR-O-074A	ATLANTIC GRUPA d.o.o.	1 EUR	15.000.000	5,75%	13.7.2007
BLSC-O-091	Belišće d.d.	1 EUR	8.000.000	5,500%	14.1.2009
BNAI-O-22CA	Bina Istra d.d.	1 EUR	210.000.000	8%	15.12.2022
DAB-O-05CA	State Agency for Deposit Insurance and Bank Rehabilitation	1 EUR	225.000.000	8,375%	19.12.2005
FNOI-D-061A	Fund for the Restitution of Deprived Property	5.11 EUR	422.310	\	1.1.2006
FNOI-D-067A	Fund for the Restitution of Deprived Property	5.11 EUR	422.310	\	1.7.2006
FNOI-D-071A	Fund for the Restitution of Deprived Property	5.11 EUR	422.310	\	1.1.2007
FNOI-D-077A	Fund for the Restitution of Deprived Property	5.11 EUR	422.310	\	1.7.2007
FNOI-D-081A	Fund for the Restitution of Deprived Property	5.11 EUR	422.310	\	1.1.2008
FNOI-D-087A	Fund for the Restitution of Deprived Property	5.11 EUR	422.310	\	1.7.2008
FNOI-D-091A	Fund for the Restitution of Deprived Property	5.11 EUR	422.310	\	1.1.2009
FNOI-D-097A	Fund for the Restitution of Deprived Property	5.11 EUR	422.310	\	1.7.2009
FNOI-D-101A	Fund for the Restitution of Deprived Property	5.11 EUR	422.310	\	1.1.2010
FNOI-D-107A	Fund for the Restitution of Deprived Property	5.11 EUR	422.310	\	1.7.2010
FNOI-D-111A	Fund for the Restitution of Deprived Property	5.11 EUR	422.310	\	1.1.2011
FNOI-D-117A	Fund for the Restitution of Deprived Property	5.11 EUR	422.310	\	1.7.2011
FNOI-D-121A	Fund for the Restitution of Deprived Property	5.11 EUR	422.310	\	1.1.2012
FNOI-D-127A	Fund for the Restitution of Deprived Property	5.11 EUR	422.310	\	1.7.2012
FNOI-D-131A	Fund for the Restitution of Deprived Property	5.11 EUR	422.310	\	1.1.2013
FNOI-D-137A	Fund for the Restitution of Deprived Property	5.11 EUR	422.310	\	1.7.2013
FNOI-D-141A	Fund for the Restitution of Deprived Property	5.11 EUR	422.310	\	1.1.2014
FNOI-D-147A	Fund for the Restitution of Deprived Property	5.11 EUR	422.310	\	1.7.2014

Symbol	Issuer	Nominal value	Issued volume	Interest	Maturity
FNOI-D-151A	Fund for the Restitution of Deprived Property	5.11 EUR	422.310	\	1.1.2015
FNOI-D-157A	Fund for the Restitution of Deprived Property	5.11 EUR	422.310	\	1.7.2015
FNOI-D-161A	Fund for the Restitution of Deprived Property	5.11 EUR	422.310	\	1.1.2016
FNOI-D-167A	Fund for the Restitution of Deprived Property	5.11 EUR	422.310	\	1.7.2016
FNOI-D-171A	Fund for the Restitution of Deprived Property	5.11 EUR	422.310	\	1.1.2017
FNOI-D-177A	Fund for the Restitution of Deprived Property	5.11 EUR	422.310	\	1.7.2017
FNOI-D-181A	Fund for the Restitution of Deprived Property	5.11 EUR	422.310	\	1.1.2018
FNOI-D-187A	Fund for the Restitution of Deprived Property	5.11 EUR	422.310	\	1.7.2018
FNOI-D-191A	Fund for the Restitution of Deprived Property	5.11 EUR	422.310	\	1.1.2019
FNOI-D-197A	Fund for the Restitution of Deprived Property	5.11 EUR	422.310	\	1.7.2019
GDKC-O-116A	City of Koprivnica	1 HRK	60.000.000	6,5%	29.6.2011
GDZD-O-119A	City of Zadar	1 EUR	18.500.00	5,5%	1.9.2011
HBOR-O-112A	Croatian bank for reconstruction and development	1 EUR	300.000.000	4,875%	11.2.2011
HYBA-O-086A	Hypo Alpe-Adria Bank d.d.	1 HRK	150.000.000	6.500%	6.6.2008
PLVA-O-115A	PLIVA d.d.	1 EUR	75.000.000	5,750%	12.5.2011
PODR-O-072A	Podravka d.d.	1 EUR	27.000.000	5,000%	20.2.2007
RHMF-O-077A	Republic of Croatia	1 EUR	400.000.000	3,875%	7.7.2007
RHMF-O-085A	Republic of Croatia	1 HRK	1.000.000.000	6.125%	28.5.2008
RHMF-O-08CA	Republic of Croatia	1 EUR	200.000.000	6,875%	14.12.2008
RHMF-O-103A	Republika Hrvatska	1 HRK	3.000.000.000	6,750%	8.3.2010
RHMF-O-125A	Republic of Croatia	1 EUR	500.000.000	6.875%	23.5.2012
RHMF-O-142A	Republic of Croatia	1 EUR	650.000.000	5,500%	10.2.2014
RHMF-O-19BA	Republic of Croatia	1 EUR	200.000.000	5,375%	29.11.2019

7. Listed Certificates

Symbol	Issuer	Nominal value	Issued volume
RHMJ-A-A	Republic of Croatia, Ministry of Construction	1 HRK	400.000.000
RHMF-A-A	Republic of Croatia, Ministry of Finance	1 HRK	644.750.000

8. Listed Commercial Papers

Symbol	Issuer	Nominal value	Issued volume
Regular Market			
MDKA-M-528A	Medika d.d.	1 HRK	60.000.000

9. Methodological Remarks

- 1) High is the highest trading price for a share in the selected period of time.
- 2) Low is the lowest trading price for a share in the selected period of time.
- 3) Last is the price of the last trade for a share in the selected period of time.
- 4) Market capitalization of the whole Exchange is calculated by multiplying the last price and the number of outstanding shares. If the share was not traded in the last month, one half of the market capitalization is added to the market capitalization of the whole Exchange. If the share was not traded in the last three months, only one fourth of the market capitalisation is added to the market capitalization of the whole Exchange.
- 5) The performance of shares is calculated with the last prices in the compared periods.
- 6) For the price curve daily closing prices are used.